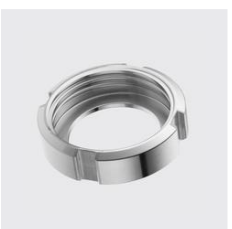




M-2003

Ecroû cannelé F, DIN 11851, poli

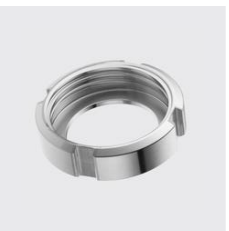
Type de matériau: acier inoxydable, Filetage rond: 65x1/6, DN: 40, ID unique: M2003P 4301 40, Matériau: 1.4301, Longueur mm: 78, Largeur mm: 21, SKU 174052040



M-2003

Ecroû cannelé F, DIN 11851, poli

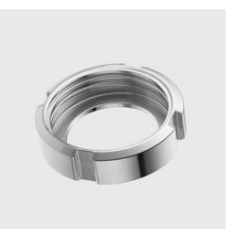
Type de matériau: acier inoxydable, Matériau: 1.4301, Filetage rond: 58x1/6, Longueur mm: 70, Largeur mm: 21, DN: 32, ID unique: M2003P 4301 32, SKU 174052030



M-2003

Ecroû cannelé F, DIN 11851, poli

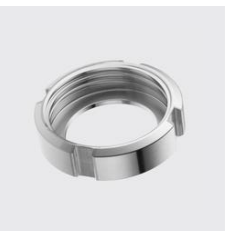
DN: 42.4, Type de matériau: acier inoxydable, ID unique: M2003P 4301 42.4, Matériau: 1.4301, Filetage rond: 58x1/6, Longueur mm: 70, Largeur mm: 21, SKU 174052035



M-2003

Ecroû cannelé F, DIN 11851, poli

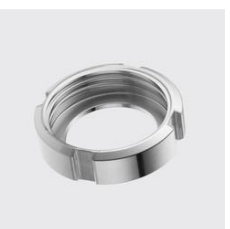
Type de matériau: acier inoxydable, Largeur mm: 40, DN: 150, Filetage rond: 190x1/4, Matériau: 1.4301, Longueur mm: 210, ID unique: M2003P 4301 150, SKU 174052070



M-2003

Ecroû cannelé F, DIN 11851, poli

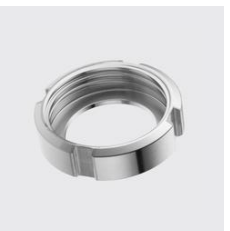
DN: 25, Longueur mm: 63, Type de matériau: acier inoxydable, Filetage rond: 52x1/6, Matériau: 1.4301, Largeur mm: 21, ID unique: M2003P 4301 25, SKU 174052025



M-2003

Ecroû cannelé F, DIN 11851, poli

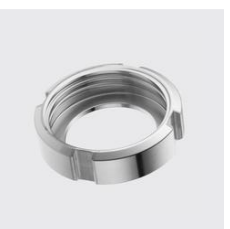
Type de matériau: acier inoxydable, ID unique: M2003P 4301 125, Matériau: 1.4301, DN: 125, Largeur mm: 35, Longueur mm: 178, Filetage rond: 160x1/4, SKU 174052065



M-2003

Ecroû cannelé F, DIN 11851, poli

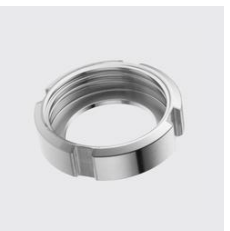
Type de matériau: acier inoxydable, Matériau: 1.4301, DN: 20, Filetage rond: 44x1/6, ID unique: M2003P 4301 20, Largeur mm: 20, Longueur mm: 54, SKU 174052020



M-2003

Ecroû cannelé F, DIN 11851, poli

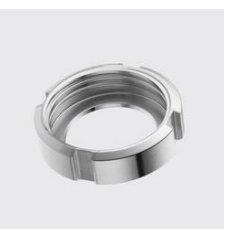
Type de matériau: acier inoxydable, Matériau: 1.4301, Longueur mm: 127, DN: 80, Filetage rond: 110x1/4, Largeur mm: 29, ID unique: M2003P 4301 80, SKU 174052055



M-2003

Ecroû cannelé F, DIN 11851, poli

Largeur mm: 18, Type de matériau: acier inoxydable, Filetage rond: 34x1/8, Longueur mm: 44, ID unique: M2003P 4301 15, DN: 15, Matériau: 1.4301, SKU 174052015



M-2003

Ecroû cannelé F, DIN 11851, poli

Type de matériau: acier inoxydable, DN: 65, Matériau: 1.4301, Filetage rond: 95x1/6, Largeur mm: 25, Longueur mm: 112, ID unique: M2003P 4301 65, SKU 174052050





M-2003

Ecroû cannelé F, DIN 11851, poli

Type de matériau: acier inoxydable. Largeur mm.: 31.
Filetage rond: 130x1/4. Longueur mm.: 148. Matériau:
1.4301, DN: 100, ID unique: M2003P 4301 100, SKU
174052060



KOHLER



M-2003

Ecroû cannelé F, DIN 11851, poli

DN: 10. Largeur mm.: 18. Type de matériau: acier inoxyda-
ble. ID unique: M2003P 4301 10. Filetage rond: 28x1/8.
Longueur mm.: 38. Matériau: 1.4301, SKU 174052010



KOHLER



M-2003

Ecroû cannelé F, DIN 11851, poli

Type de matériau: acier inoxydable. DN: 50. Filetage rond:
78x1/6. Longueur mm.: 92. Matériau: 1.4301. Largeur mm.:
22. ID unique: M2003P 4301 50, SKU 174052045



KOHLER